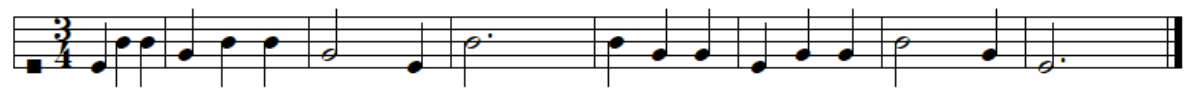


ΑΚΟΥΣΤΙΚΑ Γ' ΛΥΚΕΙΟΥ
ΕΞΑΣΚΗΣΗ ΣΟΛΦΕΖ – ΕΠΙΛΟΓΗ ΑΠΟ ΤΗ ΒΙΒΛΙΟΓΡΑΦΙΑ/ΡΕΠΕΡΤΟΡΙΟ

1 κ 2



3 κ 4



5 κ 6



7 κ 8



9

Irish



10 κ 11



12, 13 κ 14



15 κ 16



17



18

Folk song



1. Chum - ba - ra, chum - ba - ra, chum - ba - ra, chum - ba - ra, chum - ba - ra, chum - ba - ra,
chum, chum, chum, chum, chum, chum, chum, chum, Chum - ba - ra, chum - ba - ra,
chum - ba - ra, chum - ba - ra, chum - ba - ra, chum - ba - ra, chum, chum, chum!

19.

Shona folk song (from Zimbabwe)



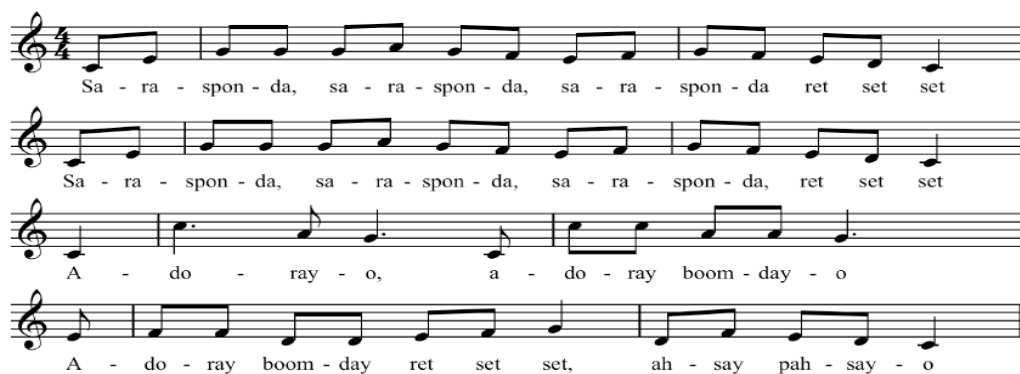
Start slowly
So - ri - da, So - ri - da, ri - da, ri - da

Faster
Da da da, Da da da, ri - da, ri - da

20

Song Title: Sarasponda

Ethnic/Geographic Origin: Dutch folk song



Sa - ra - spon - da, sa - ra - spon - da, sa - ra - spon - da, ret set set
Sa - ra - spon - da, sa - ra - spon - da, sa - ra - spon - da, ret set set
A - do - ray - o, a - do - ray boom - day - o
A - do - ray boom - day ret set set, ah - say pah - say - o